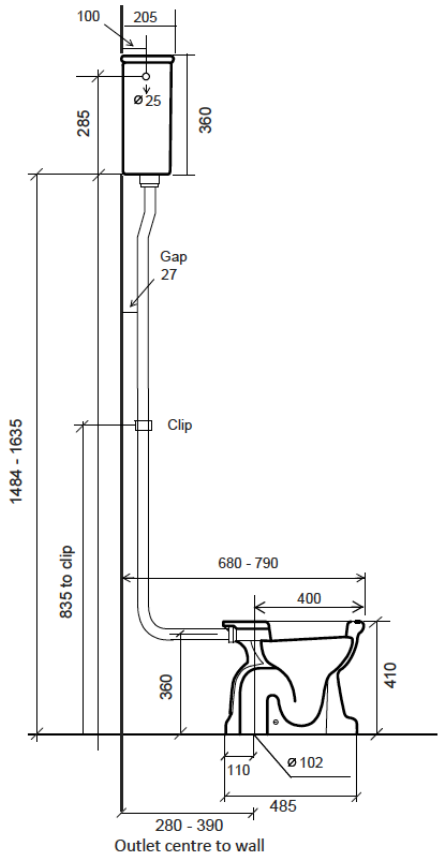


PARIS LAVATORY PAN WITH HIGH LEVEL CISTERN

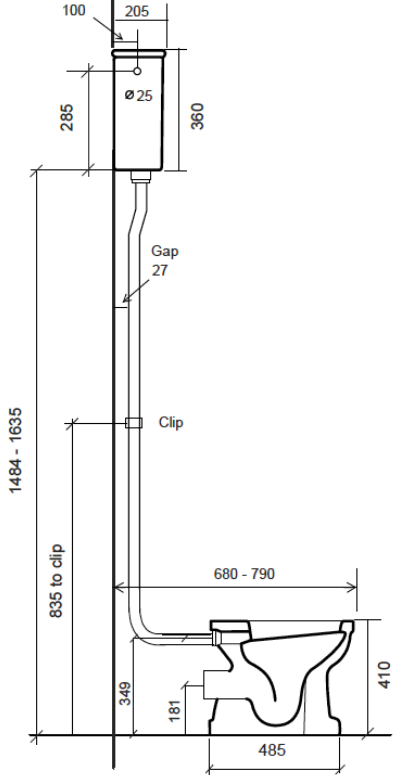
The Paris lavatory pan goes very well with the original French basins with softer detailing. It is also available to use with a low level, close coupled or concealed cistern and available as an S or P-trap.



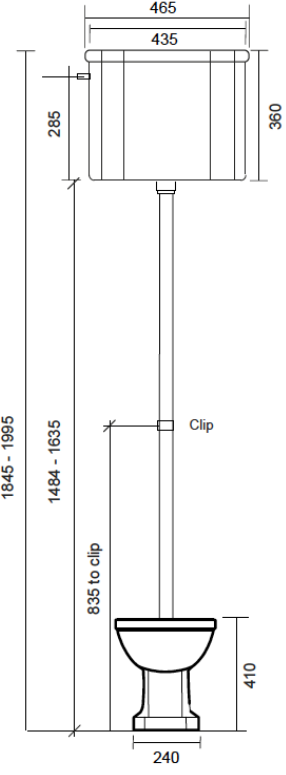
Side view with s-trap pan



Side view with p-trap pan



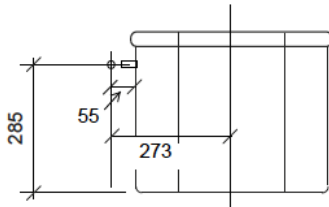
Front view



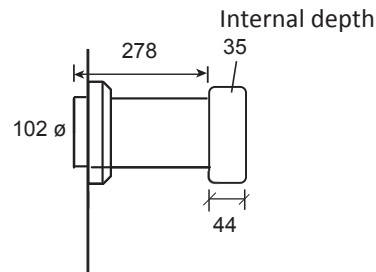
PARIS LAVATORY PAN WITH HIGH LEVEL CISTERN

(Page 2/2)

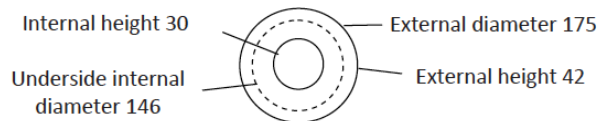
Cistern inlet pipe position diagram



Horizontal pan connector



Collar for horizontal pan connector



Technical Details

Assembly/Configuration: 2 piece water closet + high level cistern
Bowl shape: Elongated
Flush motion: Pull chain
Flush position: Right hand
Flush Primary Material: Brass
Flushing Technology: Syphonic Flush
Depth max: 790mm
Height max: 1995mm
Inlet connection size: 1/2"
Inlet connection type: Male Threading
Installation type: Wall hung cistern
Cistern width: 465mm
Outer Rim Shape: Elongated
Rim height: 410mm
Application: Bathroom / Cloakroom
Water Pressure Maximum: 6.0 bar
Water Pressure Minimum: 1.5 bar
Water Pressure Recommended: 3.0 bar
Outlet size: 102mm
Water consumption: 6 litre
Optional straight china pan connector available

Product Notes

All dimensions are in millimeters and based on original specifications and are subject to change and variation.