

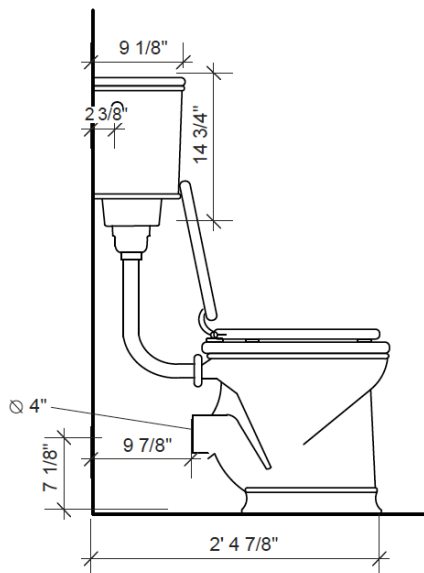
LONSDALE LAVATORY PAN WITH LOW LEVEL CISTERN - USA

The Lonsdale lavatory pan is shown with a low level cistern, matt black painted wooden seat and a graphite flush handle. It can be used with a high level or a concealed cistern.

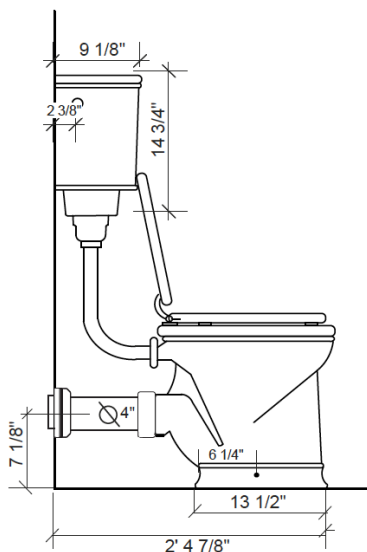
Produced in a traditional manner in England.



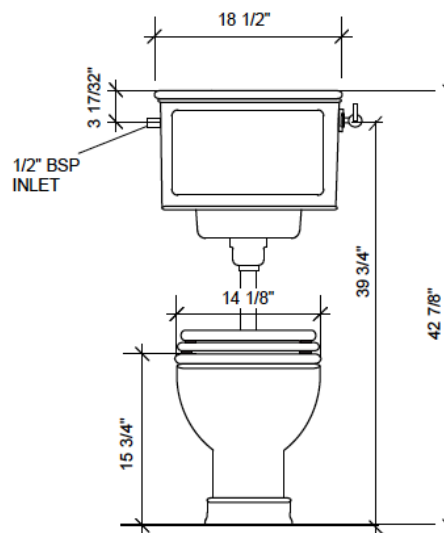
Side view



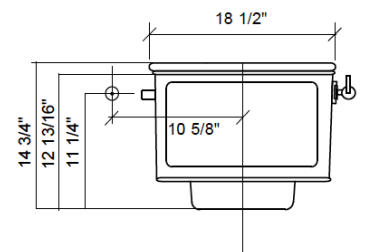
Side view with optional vertical pan connector



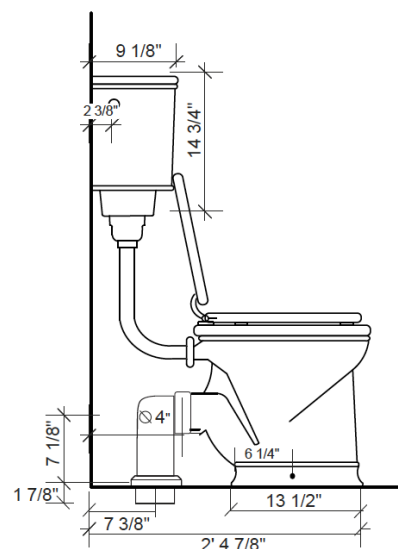
Front view



Cistern inlet pipe position diagram



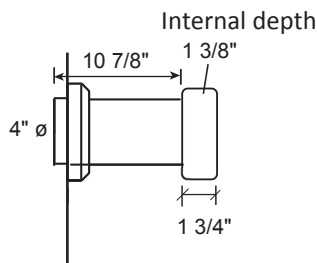
Side view with optional vertical pan connector



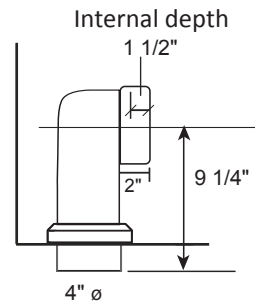
LONSDALE LAVATORY PAN WITH LOW LEVEL CISTERN - USA

(page 2/2)

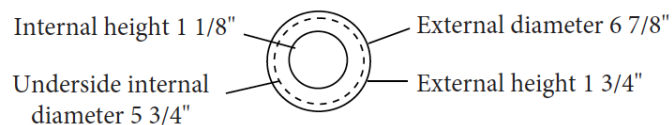
Horizontal pan connector



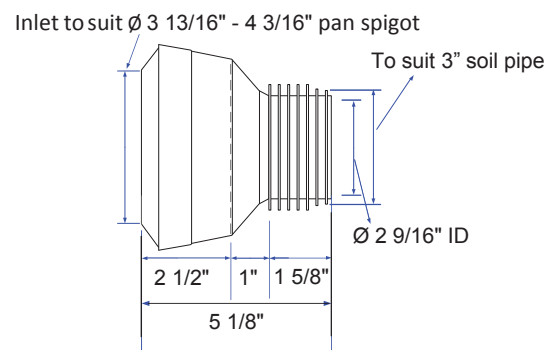
Vertical pan connector



Collar for horizontal and vertical pan connector



Mac 3" Pan Adaptor for US



Technical Details

Assembly/Configuration: 2 piece water closet + cistern
 Bowl shape: Elongated
 Flush motion: Flush handle
 Flush position: Right
 Flush Primary Material: Brass
 Flushing Technology: Syphonic Flush / Dudley Turbo
 Depth: 28 7/8"
 Height: 42 7/8"
 Inlet connection size: 1/2"
 Inlet connection type: Male BSP
 Installation type: Wall hung cistern / freestanding pan
 Cistern width: 18 1/2"
 Outer Rim Shape: Elongated
 Seat height: 15 3/4"
 Application: Bathroom / Cloakroom
 Trapseal depth: 2 1/2"
 Water Pressure Maximum: 85.0 psi
 Water Pressure Minimum: 20.0 psi
 Water Pressure Recommended: 45.0psi
 Outlet size: 4"
 Water consumption 6 litres / 1.585 USA gallons
 Optional china pan connector, straight or 90° available
 Fixing is through side of pan on to horizontal bent brackets under the pan (supplied)

Codes & Standards

Ceramic complies to CE Standards
 Flush mechanism complies to WRAS Standards



Product Notes

All dimensions are based on original specifications
 and are subject to change and variation.

THE
 WATER/
 MONOPOLY

+44 (0)20 7624 2636 - thewatermonopoly.com